

State of Wyoming Corner Record

(in compliance with the CORNER PERPETUATION AND FILING ACT, Wyoming Statutes, 1977, Section 36-11-101, et. seq., and the Rules and Regulations of the Board of Registration for Professional Engineers and Professional Land Surveyors)

Reverse side of this form may be used if more space is needed.

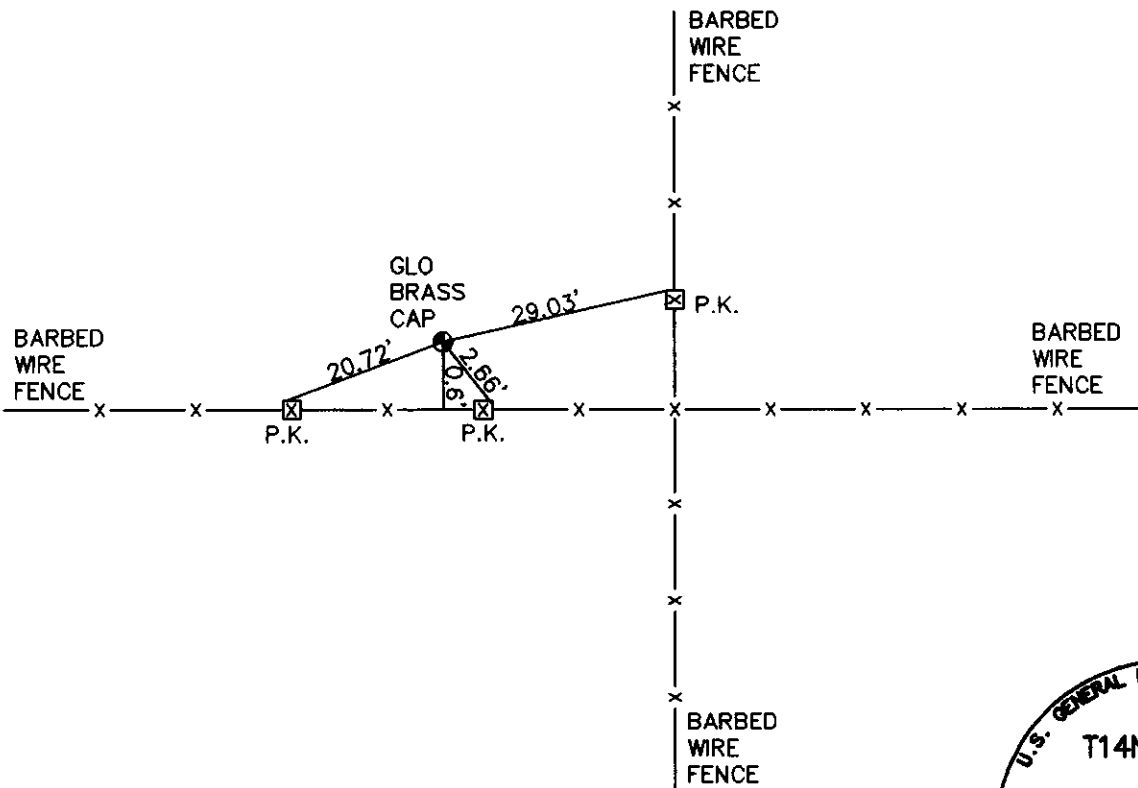
Record of original survey and citation of source of historical information (if corner is lost or obliterated). Description of corner monumentation evidence found and/or monument and accessories established to perpetuate the location of this corner. Sketch of relative location of monument, accessories, and reference points with course and distance to adjacent corner(s) (if determined in this survey). Method and rationale for reestablishment of lost or obliterated corner.

GLO RECORD: SET AN IRON POST, 3' LONG, 2" DIAMETER, 18" IN THE GROUND TO BEDROCK, AND IN A MOUND OF STONE TO TOP, FOR THE CORNER TO SECTIONS 2, 3, 34, AND 35, WITH BRASS CAP MARKED AS SHOWN BELOW.

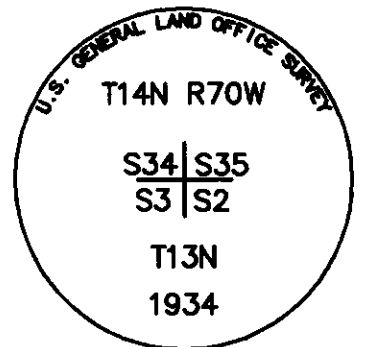
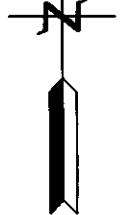
MONUMENT FOUND: FOUND A 3" GLO BRASS CAP SURROUNDED IN A MOUND OF STONES. CAP MARKED AS SHOWN BELOW.

MONUMENT SET: SET NOTHING.

REFERENCES: REFERENCES SHOWN BELOW.



197553
 LARAMIE COUNTY CLERK
 CHEYENNE, WY.
 '97 FEB 7 AM 8 39



Date of Field Work: 4-16-96 Office Reference: 96093

CROSS INDEX DIAGRAM

A	1	2	3	4	5	6	7	8	9	10	11	12	13	14	15	16	17	18	19	20	21	22	23	24	25
B																									
C	6		5		4		3		2																
D																									
E																									
F																									
G	7		8		9		10		11		12														
H																									
J																									
K																									
L	18		17		16		15		14		13														
M																									
N																									
O																									
P	19		20		21		22		23		24														
Q																									
R																									
S																									
T	30		29		28		27		26		25														
U																									
V																									
W																									
X	31		32		33		34		35		36														
Y																									
Z																									

Firm/Agency, Address

STEIL SURVEYING SERVICES, LLC.

1102 WEST 19th STREET

CHEYENNE WY 82001

Telephone Number: **(307) 634-7273**

This corner record was prepared by me or under my direction and supervision.

SEAL & SIGNATURE



BOOK 1443

Corner Name: NW SECTION CORNER Section: 2 T13N R70W; 6th P.M. Cross-Index No.: A-17
 SBRPEPLS/PLSW: March 1994

0964